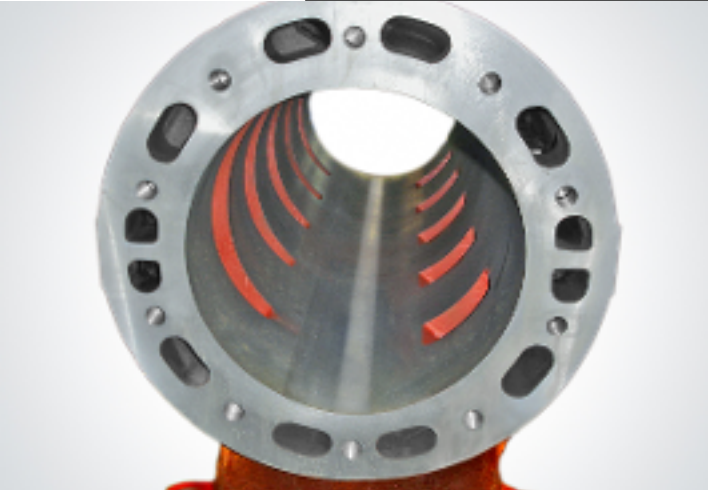


# JEFFCO REBUILD INSPECTION PROCESS

**CYLINDERS:** Check for cracks, bore, plug dowel holes, vat, and prime all water jackets

**ROTORS:** Check for straightness, measure all bearing journals, lightly sand any rough spots, check width of rotor slots to make sure they are in tolerance and check the key way

**HEADS:** Vat, face lightly if needed, plug dowel holes, drill stud holes out if needed, measure each head to make sure they are in tolerance, check water jackets



## JEFFCO USES ALL NEW PARTS INCLUDING:

BEARINGS  
HUB SEAL RINGS  
OIL SEALS  
PACKING

GASKETS  
LOCK WASHERS  
CHECK VALVES  
CARBON BLADES

All compressors are inspected and pressure tested before leaving our facility.

Jeffco tries to keep every size compressor in stock at all times for your convenience, from size C-70 to C-608.

Jeffco is not a factory authorized service center for FLSmidth nor does Jeffco provide Fuller Company/FLSmidth OEM parts or compressors

# JEFFCO LLC

**918-279-0669**

Fax: 918-279-0804

### Hours of Operation

Monday-Friday: 8:00am-5:00pm CST

Saturday & Sunday: Closed

### 24/7 Emergency Number

918-691-5372

### Shipping Address

14608 S 385th E Ave.

Coweta, OK 74429

### Mailing/Billing Address

PO Box 847

Coweta, OK 74429

### President

Jeff McFarlane

jeff.jeffco@valornet.com

### Sales Manager

Clint Conner

sales.jeffco@windstream.net

### Office Manager

Jamie Griffin

jamie.jeffco@windstream.net

### Shop Manager

Cody Robertson

cody.jeffco@windstream.net



# JEFFCO CARBON FIBER BLADES

Our blades are carbon composites just like the OEM blades, and have similar attributes including:

- Up to 4X the wear resistance of kevlar and phenolic composites
- Proper dimensions and tolerances
- Will help reduce wash boarding
- Will help prevent cylinder breakage under catastrophic conditions

Our blades have 35% more flex strength (98 kpsi vs 72 kpsi) than the OEM version, and wear resistance is correlated to flex strength. Kevlar and phenolic blades only attain a flex strength of ~24kpsi.

Jeffco is not a factory authorized service center for FLSmidth nor does Jeffco provide Fuller Company/FLSmidth OEM parts or compressors

## JEFFCO PREMIER \*NEW\* CYLINDERS AND HEADS



**Call 918-279-0669 for a quote today!**

Introducing our **BRAND NEW** Jeffco Premier cylinders and heads for 250/300 and 350 compressors!

Why buy OEM parts when you can get the same quality at a fraction of the cost?

